

Dear Customer

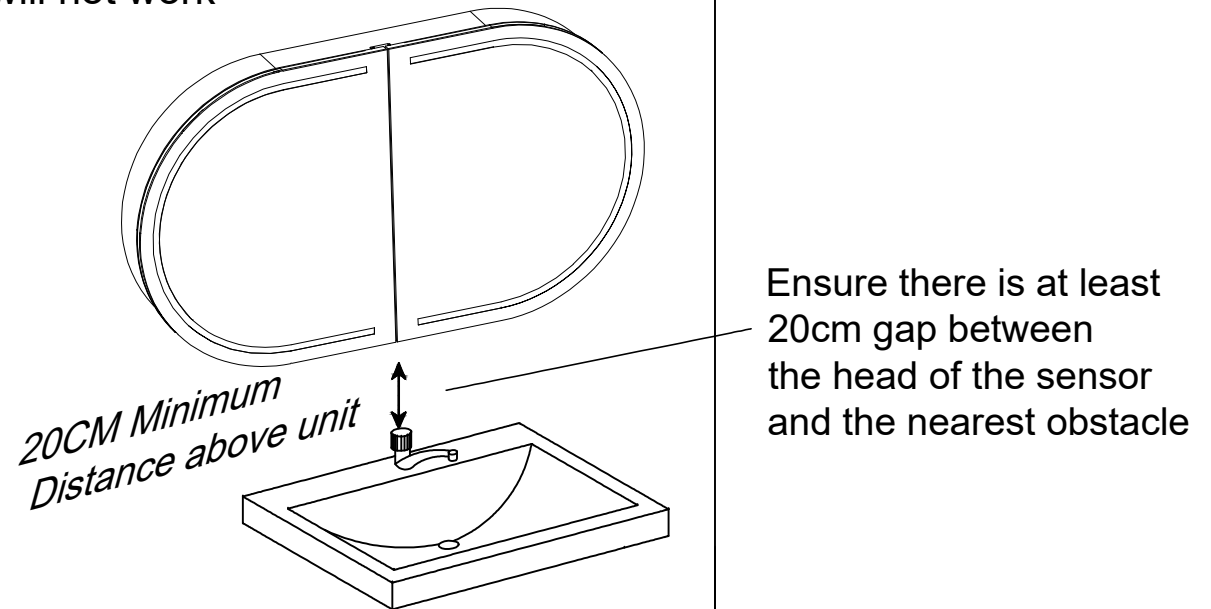
Very important Please Note:

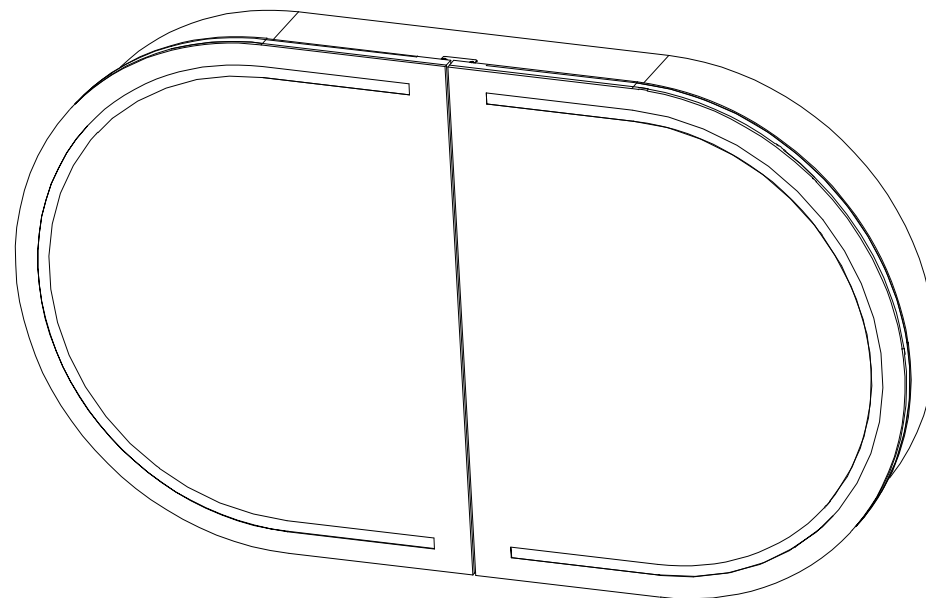
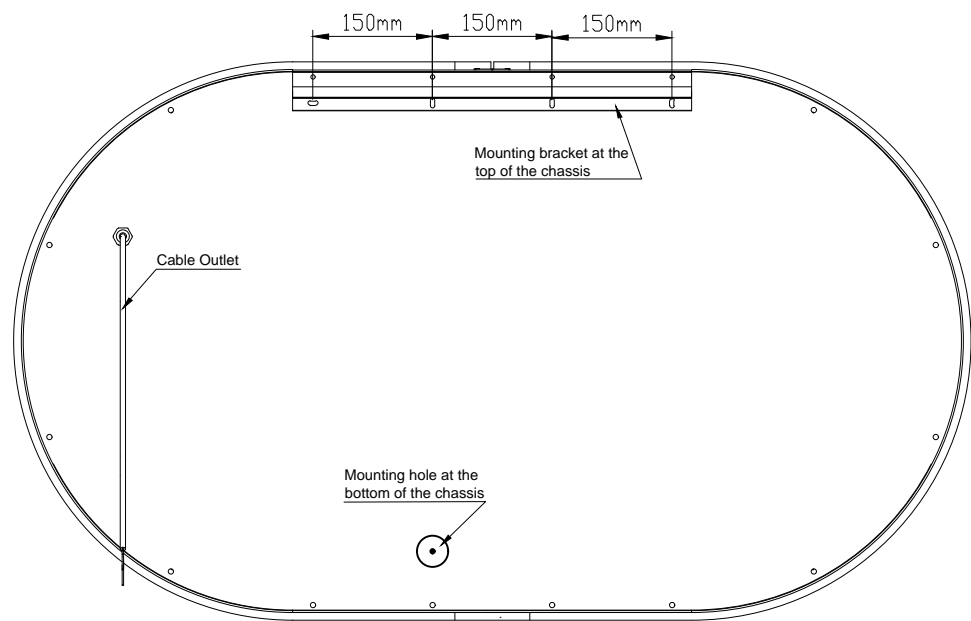
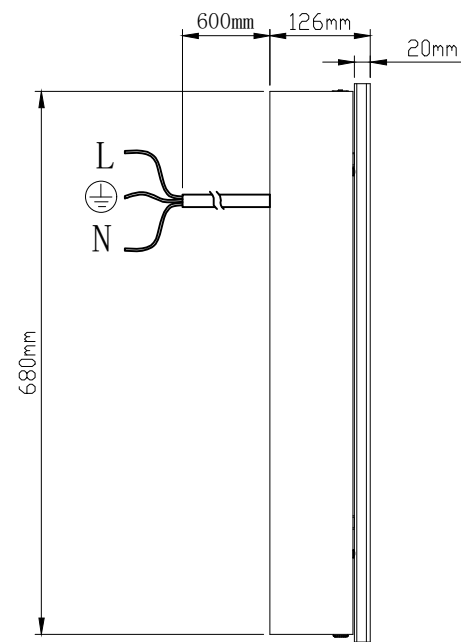
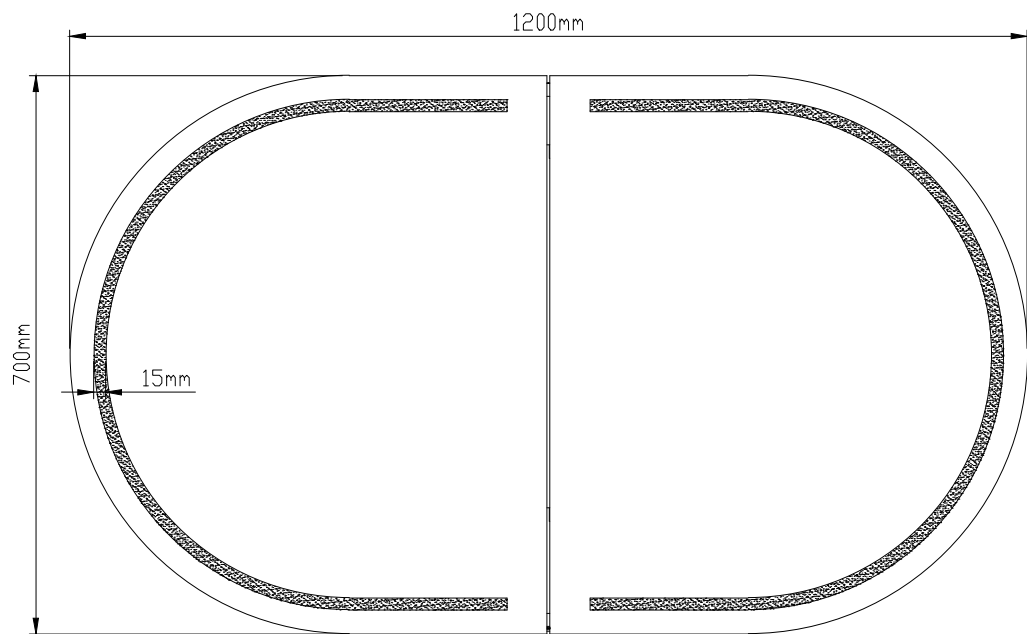
Your new cabinet has an Infra-red sensor on the bottom of the rear carcass.

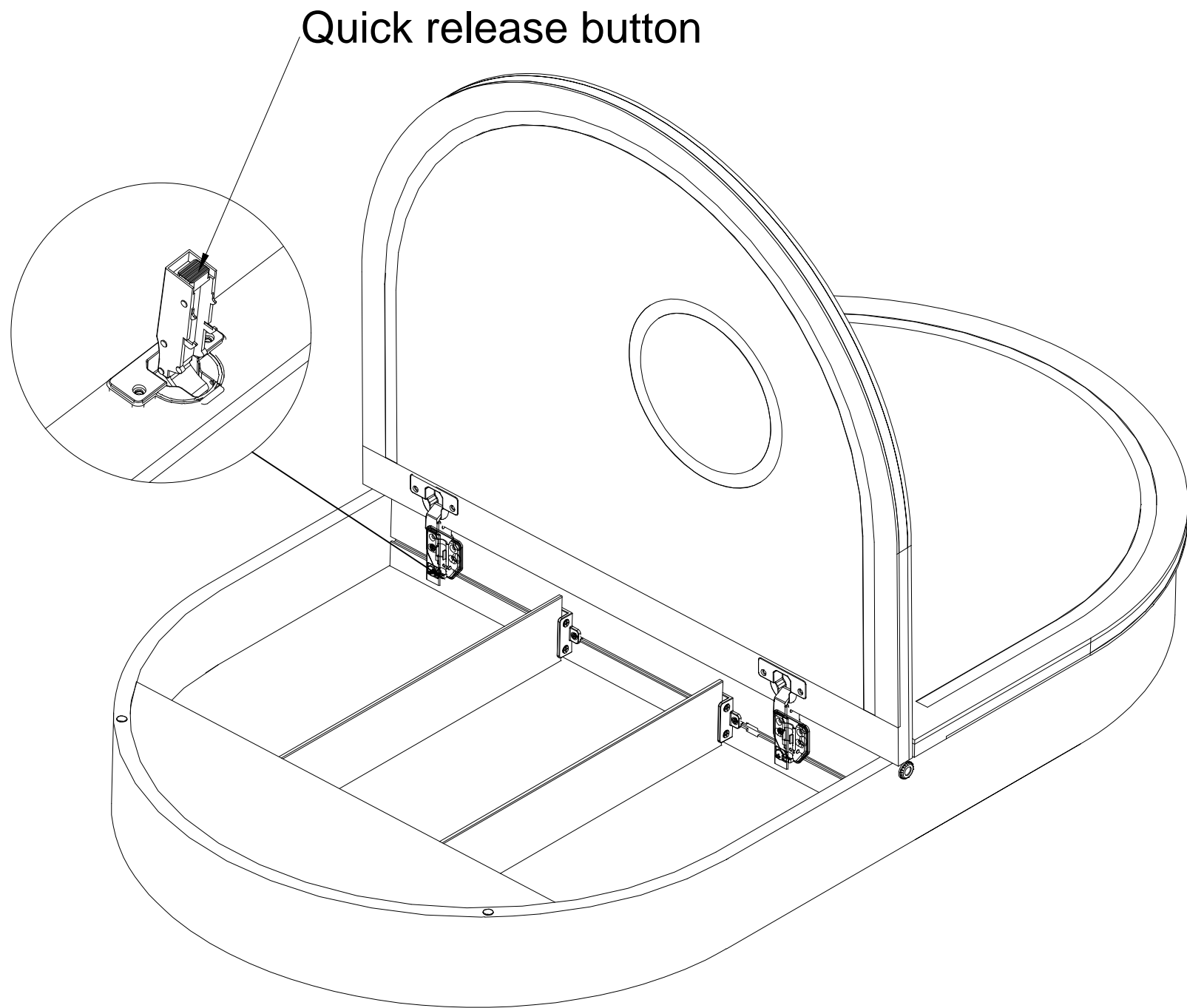
There needs to be at least a 20cm gap between the head of the sensor and the nearest obstacle, a wall for example.

If the gap is less than 20cm then your sensor will not work properly!

IMPORTANT
CABINET LOCATION

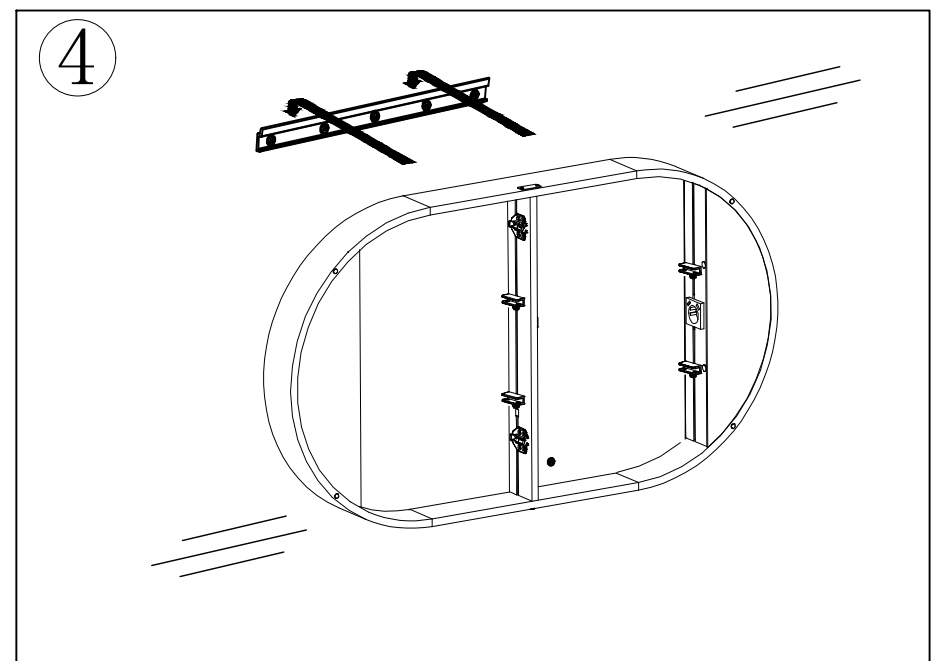
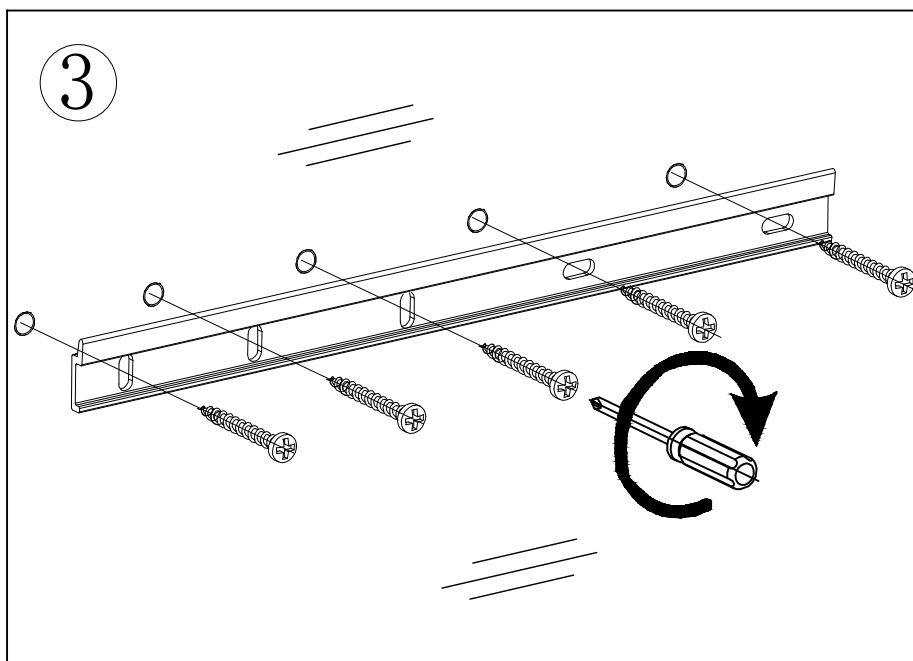
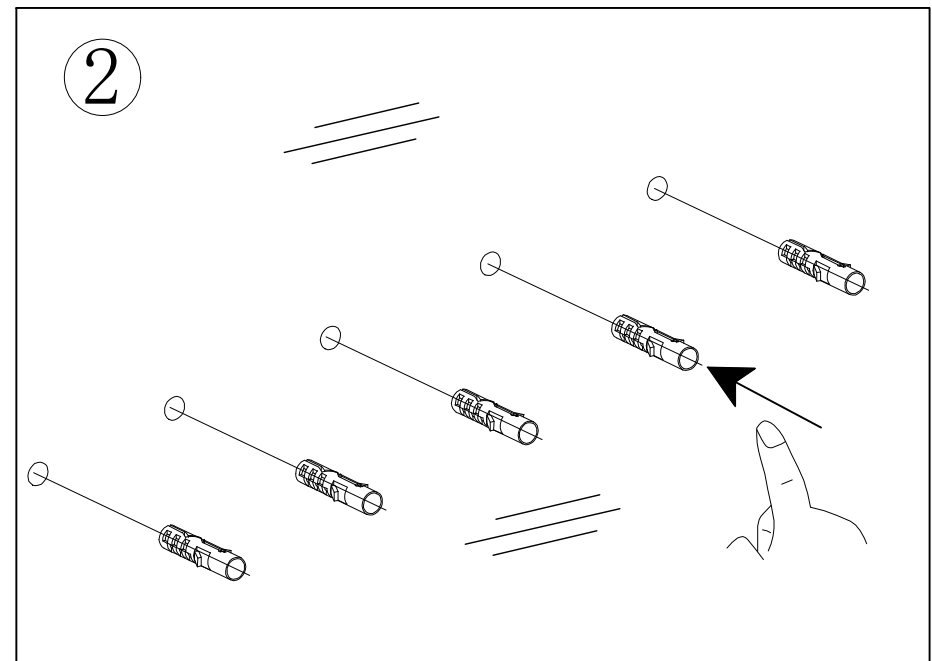
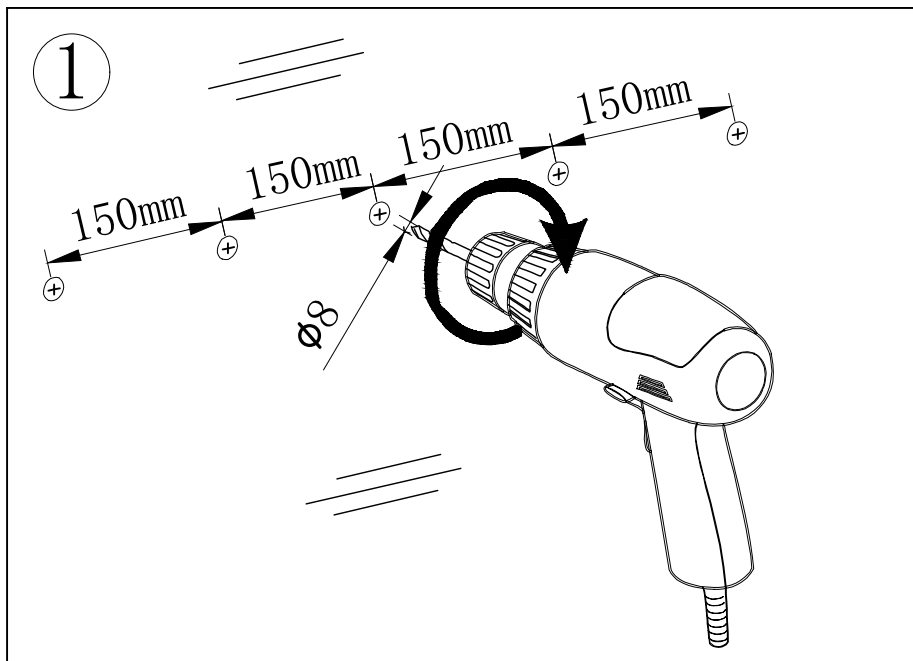


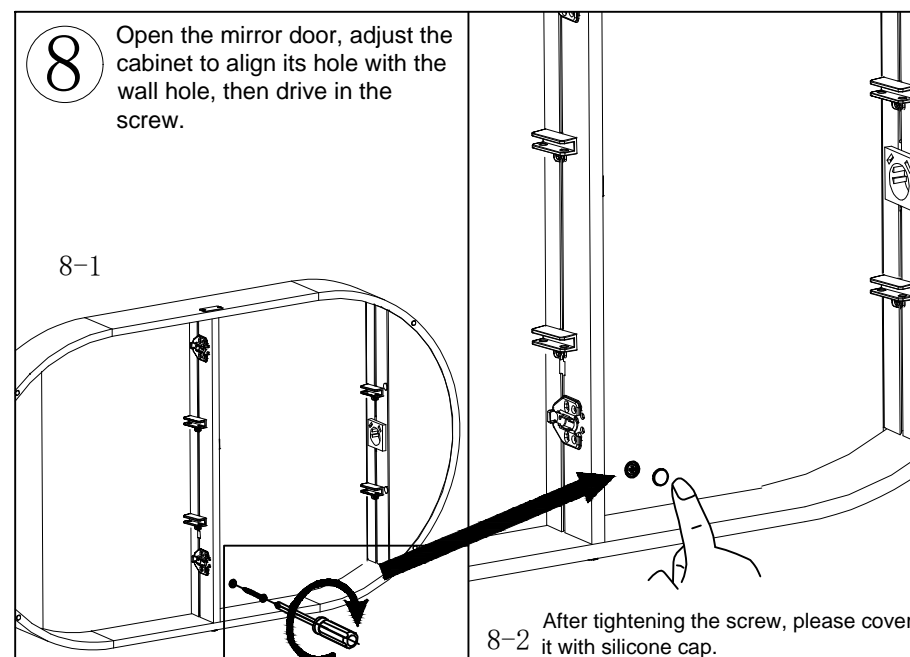
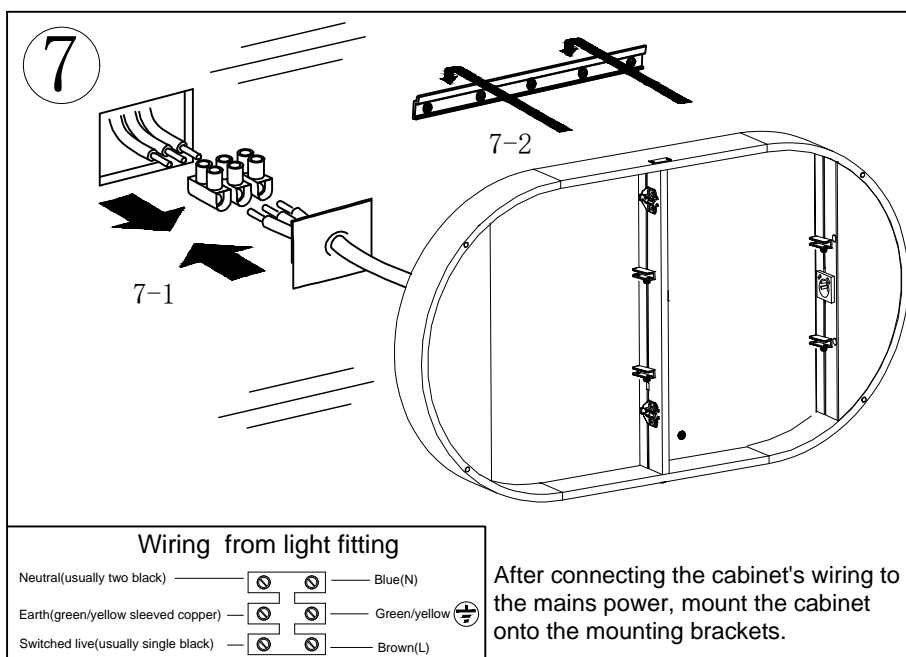
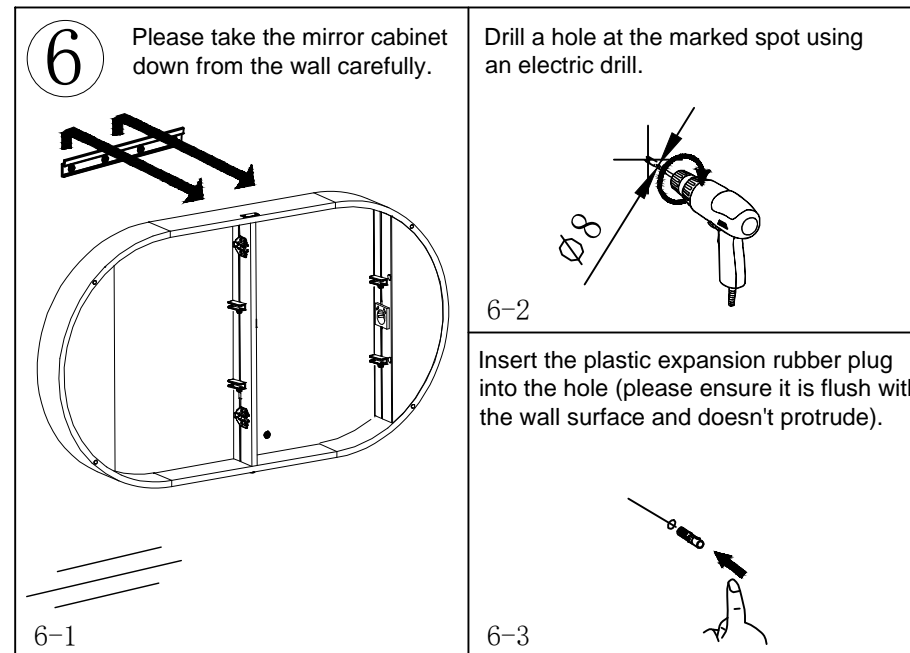
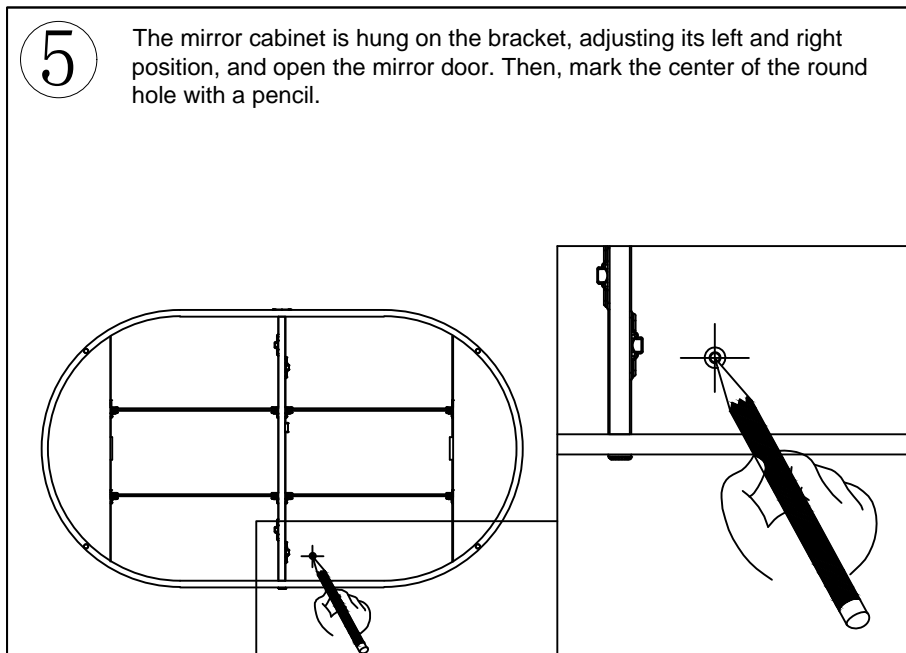




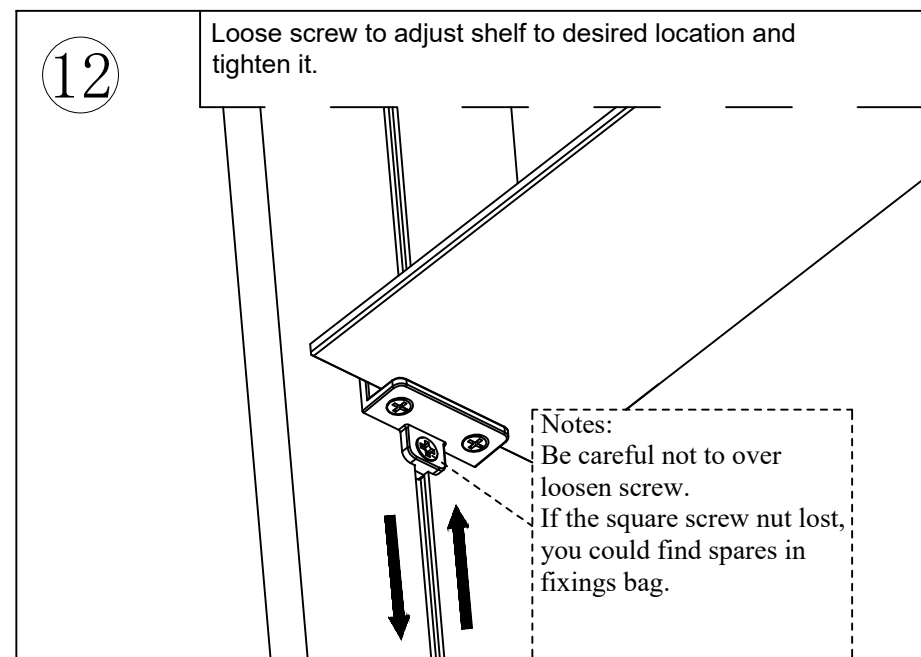
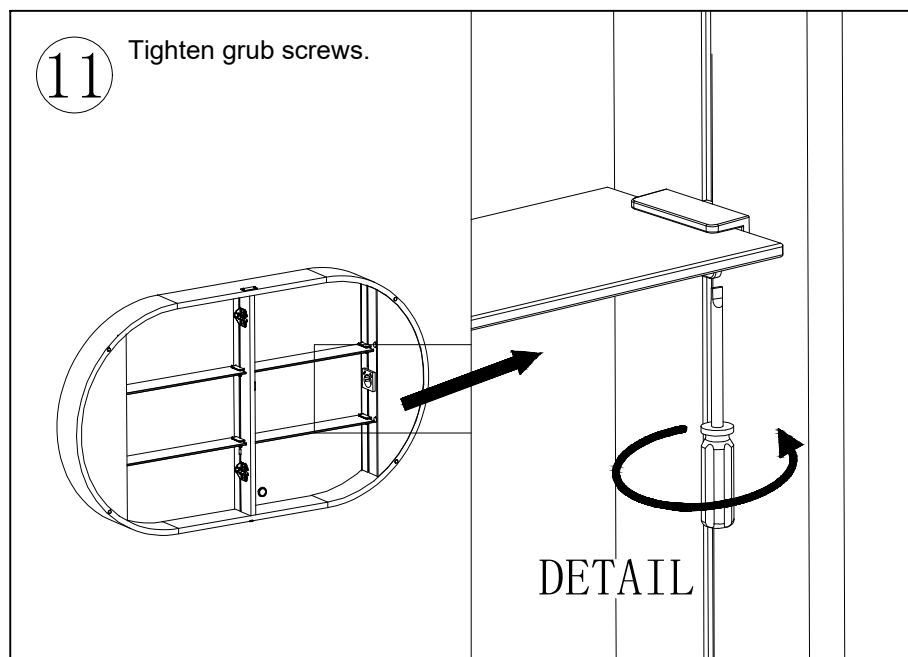
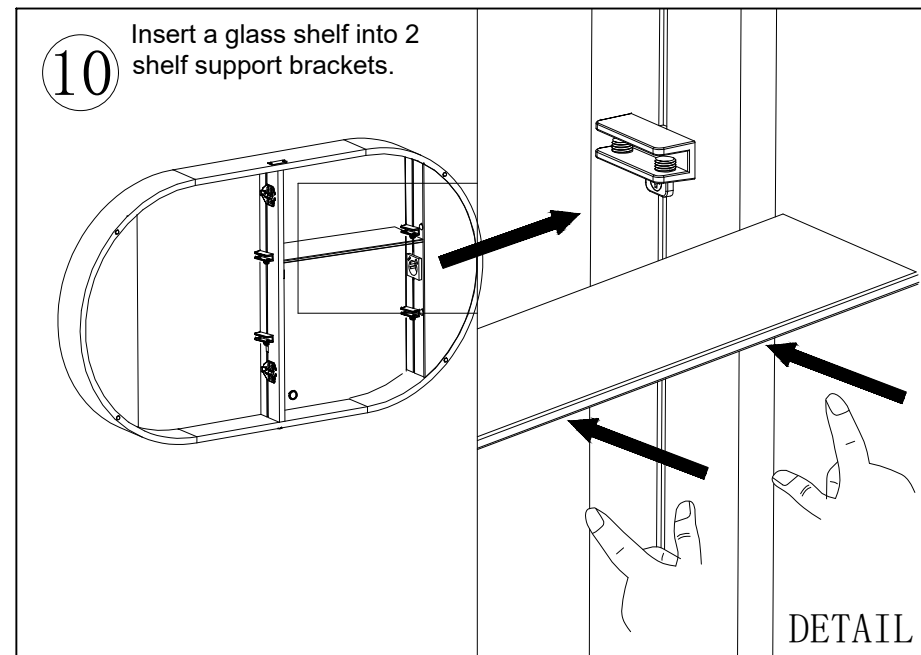
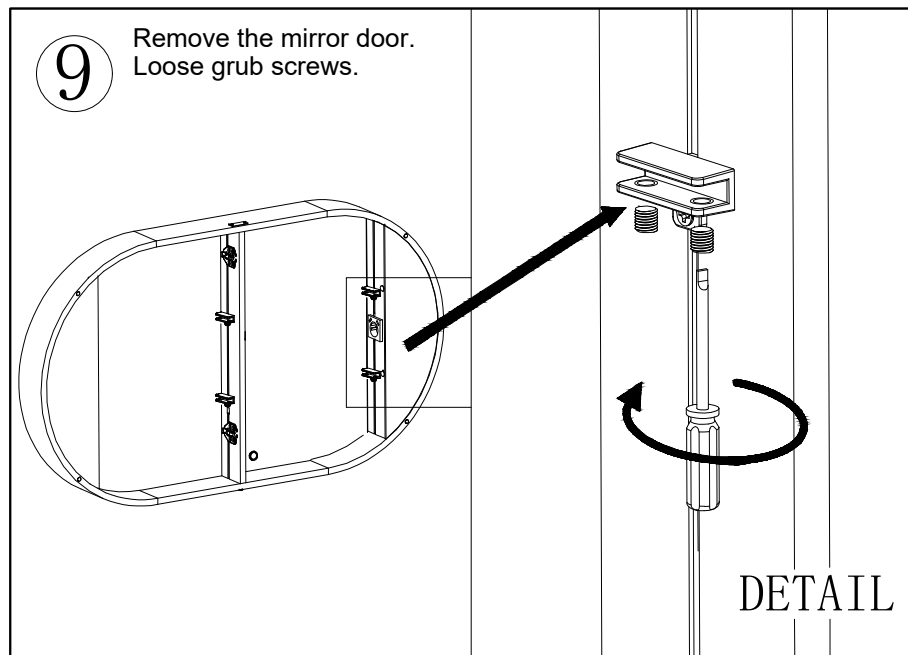
Remove the mirror door and lay it flat on a soft surface, otherwise it will damage the mirror.
Press the quick release button on the hinge to release the hinge. Please do not loosen the hinges from the mirror door.

INSTALLATION INSTRUCTIONS



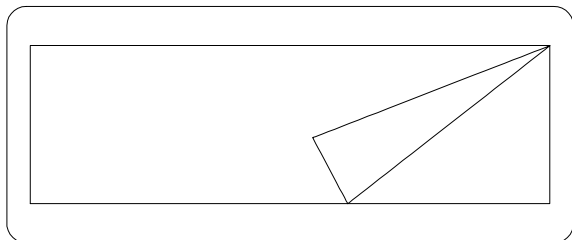


FIXING INSTRUCTIONS FOR THE ADJUSTABLE GLASS SHELVES

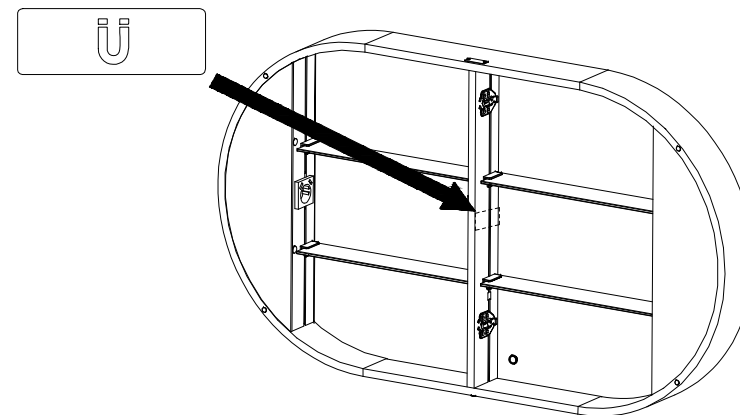


MAGNETIC STRIP INSTALLATION INSTRUCTION

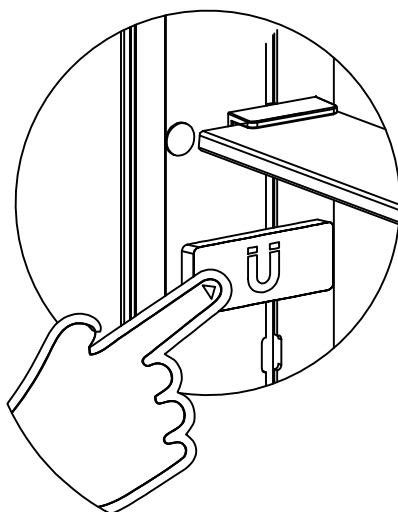
- ① Tear the back adhesive film



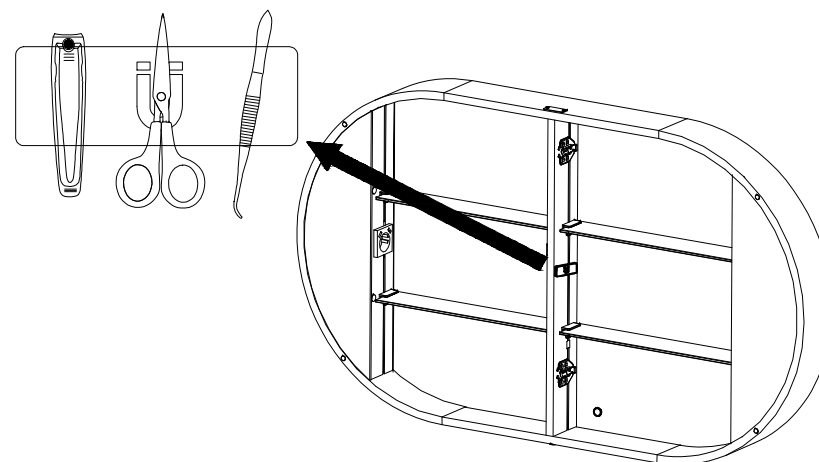
- ② Stick it on a suitable position



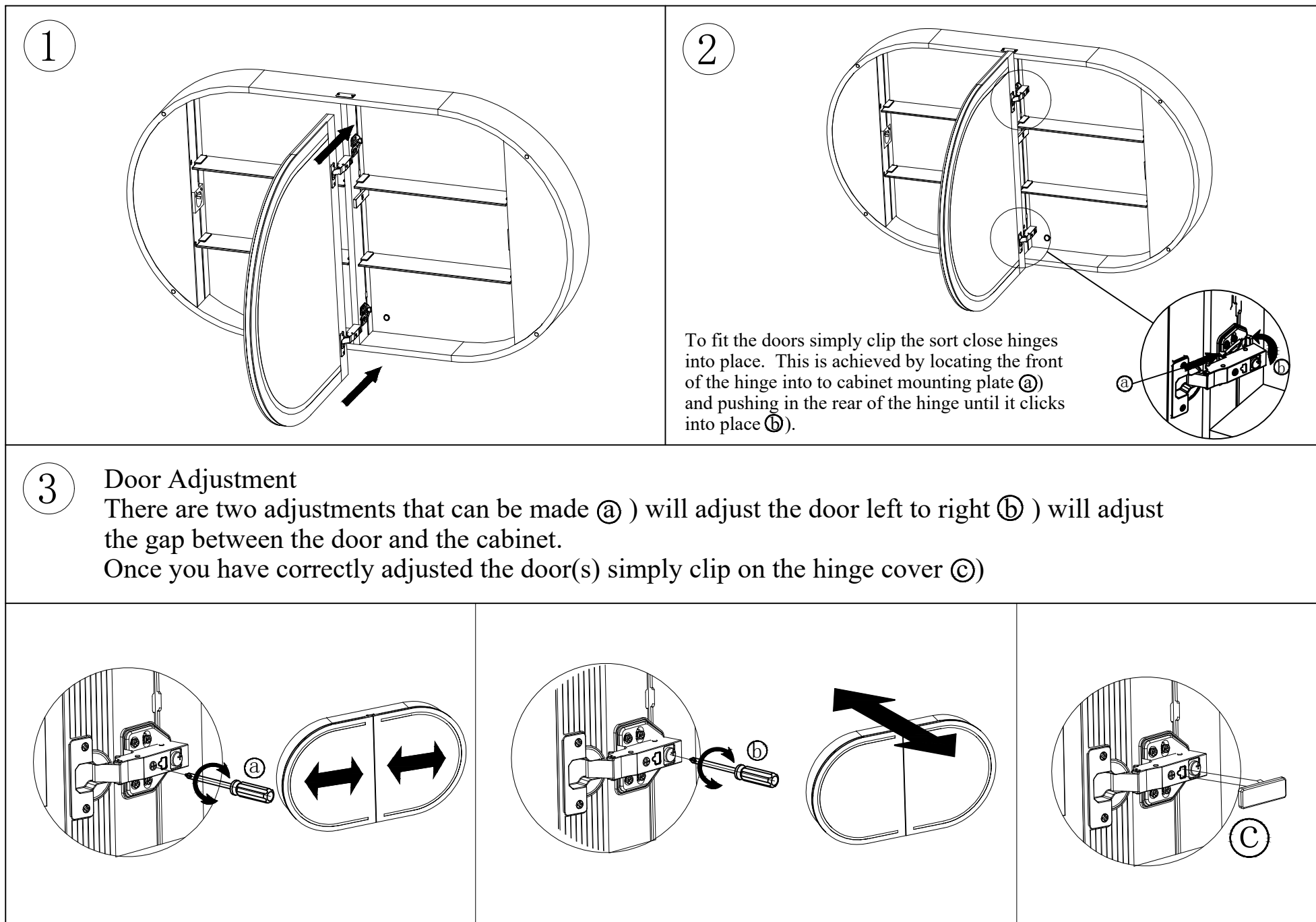
- ③ Press and hold after pasting



- ④ Put your accessories on the magnet



FIXING INSTRUCTIONS FOR THE MIRROR DOOR (STRONGLY ADVICE TO INSTALL EACH DOOR WITH 2 PERSONS)



CAUTION: We recommend that you make sure the rear cable is not kinked or overlapped after installation to avoid potentially cracking the internal mirror.

